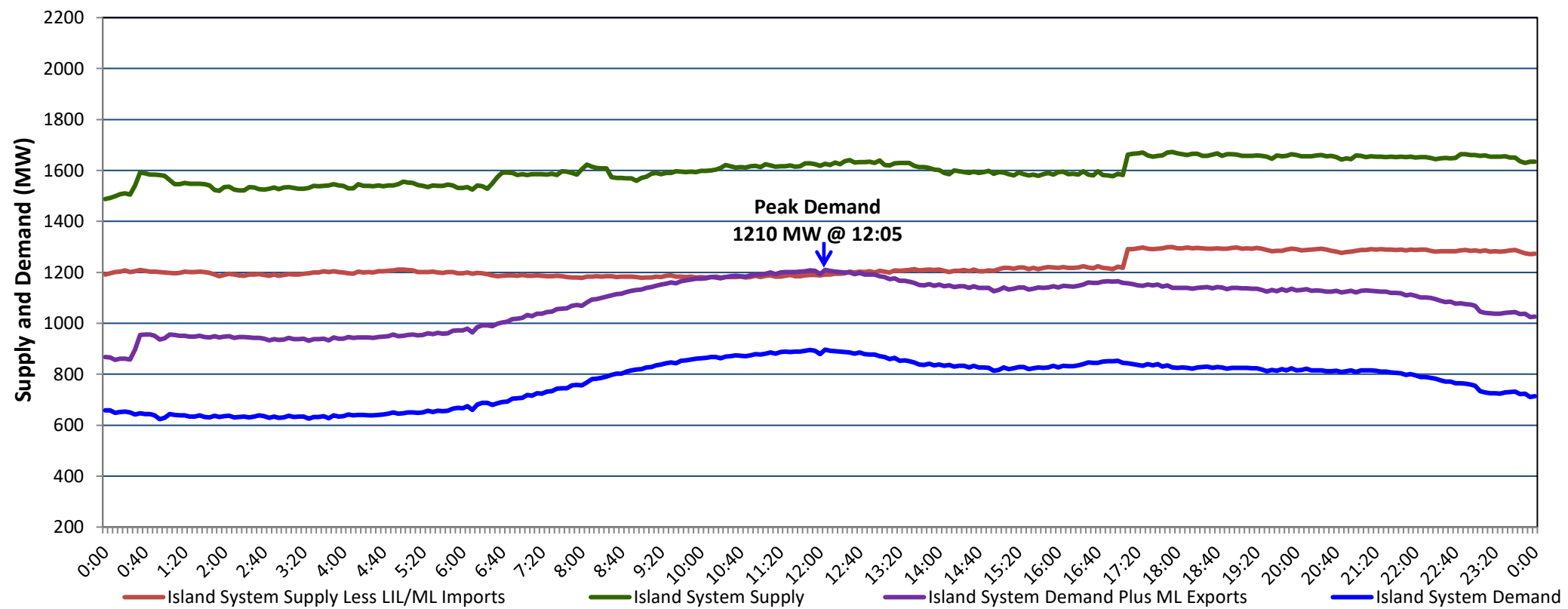


**Newfoundland Labrador Hydro (NLH)  
Supply and Demand Status Report Filed Monday, June 12, 2023**

**Section 1  
Island Interconnected System Supply, Demand & Exports  
Actual 24 Hour System Performance For Saturday, June 10, 2023**



**Supply Notes For June 10, 2023**

1,2

- A As of 0701 hours, March 06, 2023, Upper Salmon Unit unavailable due to planned outage (84 MW).
- B As of 0006 hours, April 09, 2023, Holyrood Unit 3 unavailable due to planned outage (150 MW).
- C As of 1600 hours, May 15, 2023, Holyrood Unit 1 available but not operating (170 MW).
- D As of 0800 hours, May 21, 2023, Holyrood Unit 2 unavailable due to planned outage (170 MW).
- E As of 1751 hours, May 24, 2023, Bay d'Espoir Unit 5 unavailable due to planned outage (76.5 MW).
- F As of 0719 hours, June 07, 2023, Holyrood Gas Turbine unavailable due to planned outage (123.5 MW).
- G At 1706 hours, June 10, 2023, Bay d'Espoir Unit 6 available (76.5 MW).

**Section 2  
Island Interconnected Supply and Demand**

Sun, Jun 11, 2023	Island System Outlook <sup>3</sup>		Seven-Day Forecast	Temperature (°C)		Island System Daily Peak Demand (MW)	
				Morning	Evening	Forecast	Adjusted <sup>7</sup>
Available Island System Supply: <sup>5</sup>	1,654	MW	Sunday, June 11, 2023	6	5	1,190	1,190
NLH Island Generation: <sup>4,8</sup>	920	MW	Monday, June 12, 2023	5	6	1,185	1,185
NLH Island Power Purchases: <sup>6</sup>	130	MW	Tuesday, June 13, 2023	6	6	905	905
Other Island Generation:	210	MW	Wednesday, June 14, 2023	6	5	900	900
ML/LIL Imports:	394	MW	Thursday, June 15, 2023	8	6	845	845
Current St. John's Temperature & Windchill:	7 °C	N/A °C	Friday, June 16, 2023	10	16	825	825
7-Day Island Peak Demand Forecast:	1,190	MW	Saturday, June 17, 2023	13	15	730	730

**Supply Notes For June 11, 2023**

3

- Notes:
1. Generation outages for running and corrective maintenance are included. These are not unusual for power system operations. They generally do not impact customer supply. The power system operators schedule outages to system equipment whenever possible to coincide with periods when customer demands are low and sufficient supply reserves are available. However, from time to time equipment outages are necessary and reserves may be impacted.
  2. Due to the Island system having no synchronous connections to the larger North American grid, when there is a sudden loss of large generating units there may be a requirement for some customer's load to be interrupted for short periods to bring generation output equal to customer demand. This automatic action of power system protection, referred to as under frequency load shedding (UFLS), is necessary to ensure the integrity and reliability of system equipment. Under frequency events have typically occurred 5 to 8 times per year on the Island Interconnected System and the resultant customer load interruptions are generally less than 30 minutes. With the activation of the Maritime Link frequency controller during the winter of 2018, UFLS events have occurred less frequently.
  3. As of 0800 Hours.
  4. Gross output including station service at Holyrood (24.5 MW) and improved NLH hydraulic output due to water levels (35 MW).
  5. Gross output from all Island sources (including Note 4).
  6. NLH Island Power Purchases include: CBPP Co-Gen, Nalcor Exploits, Rattle Brook, Star Lake, Wind Generation and capacity assistance (when applicable).
  7. Adjusted for curtailable load, market activities and the impact of voltage reduction when applicable.
  8. Due to limitations inherent in the design of combustion turbines, the output of combustion turbines may be reduced in the event that ambient temperatures exceed the threshold

**Section 3  
Island Peak Demand Information  
Previous Day Actual Peak and Current Day Forecast Peak**

Sat, Jun 10, 2023	Actual Island Peak Demand <sup>9</sup>	12:05	1,210 MW
Sun, Jun 11, 2023	Forecast Island Peak Demand		1,190 MW

Notes: 9. Island Demand / LIL / ML Exports (where applicable) is supplied by NLH generation and purchases, plus generation owned and operated by Newfoundland Power and Corner Brook Pulp & Paper (Deer Lake Power, DLP).